

Distance Education: Yesterday, Today and Tomorrow

Patricia Neely, EdD

Trevor Belcher, PhD

Jan Tucker, PhD

Yesterday

Shorthand Instruction

Home Studies

Radio and T.V. Programs

Advances in Technology



Today



MOOCs



CBE



Hybrid

Correspondence
(multiple
formats)

Subscription
Models



UNIVERSITY OF
FLORIDA

straighterline

Tomorrow

- New models shaped by:



New
Technologies



New
Pedagogical
Approaches



Lower costs
and greater
access



Future Models Will Have:

- Self-paced courses or learning modules
- Engaging learning content
- Clear learning outcomes and robust assessments
- On-call SME's for content help
- Peer-to-peer learning
- Leverage new technologies

Solo Study Model

Solo Study

Predesigned learning content delivered via solar powered personal devices

Audience:

Students with limited access to electricity and/or the internet including students in developing nations or military students

How it works:

- Student buys device with preloaded learning content (fee)
- Student register to unlock device
- Student completes assignments on device
- Device sends assignments at defined intervals
- Faculty grade assignments (fee)



Considerations for New Solo Study Model

Inexpensive to deliver/administer

Hinges on superior assessment development

Authentication of student work

Relies on open content/resources

Accrediting bodies may pose restrictions on credits awarded

Adaptive Learning Model

- Uses software driven by data collection

Tailors Coursework

- Individualized learning
- Better support
- May lead to better retention and graduation rates

Differs from personalized learning

- Personalized: Small scale (tutoring, extra credit)
- Adaptive: Large scale, overlapping versions, technology heavy

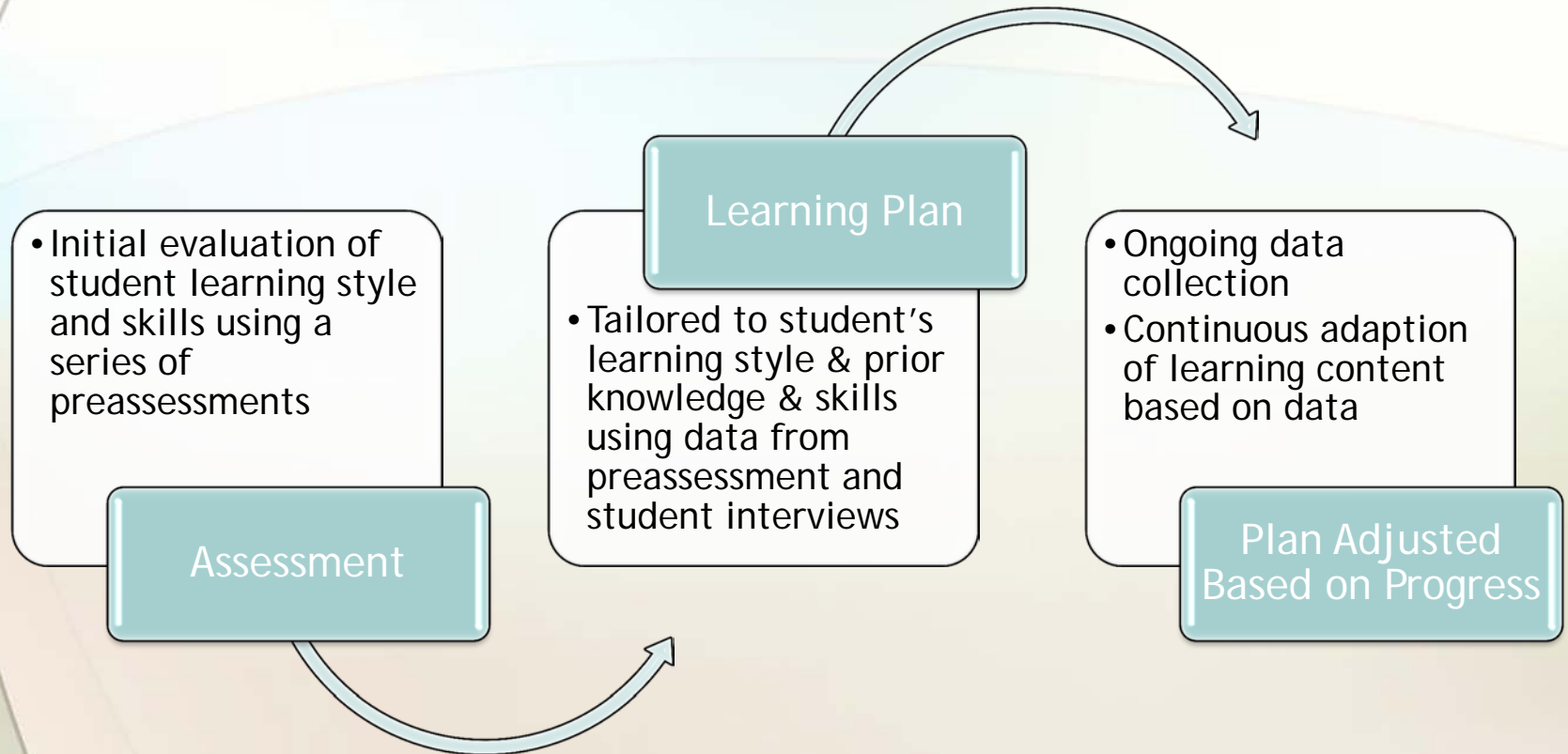
For profits leg up?

- Early adopters of technology (LMS, data-analytics, simulations, online labs etc.)
- Large number of students

Who is Using Adaptive Learning?

Apollo Group	American Public University	Career Education Corporation
Investing \$1 billion (UofP)	Incorporating in the instructional design process	Creating hybrid versions of adaptive learning
Learning Genome Project (Adaptive LMS)	Semantic Mapping: searches for gaps in content	Building "content agnostic" (not tied to a specific course)
Using a Social Network Style	Focusing on both qualitative and quantitative data	Integrating adaptive learning platform (Intellipath) across curriculums

How Adaptive Learning Works



Community Learning Model

- Learning beyond classroom walls
- Focuses on problem solving and critical thinking
- Builds personal connections with community
- Bridges gap between how students live and how they learn

Community Learning Model



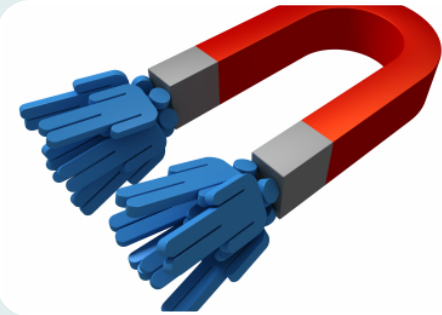
Community Learning Model Features



Develops
learners and
citizens



Students
acquire,
practice and
apply
concepts



Unstructured,
messy, best
for self
motivated
learners

Summary

- Unbundling faculty roles and course objectives
- Expensive and time consuming
- Limited data on success
- Will require constant updating/modifications

How Community Learning Works

Community of Learners identifies need to education or training

- Example 1: Online Community of Nurse Managers wants to learn how to work with diverse populations and they need graduate credits for professional development

Community members visit the local university's website and submit a request for training

- The university may already have a catalog of offerings that can be searched in addition to requesting training be created or adapted to meet the group's needs.

Community of Learners complete the courses/training

- Cohort of learners
- Asynchronous and/or synchronous interactions

Future Research

- Emerging models
- Technological advancements to add flexibility
- Low cost options that can be customized to learner groups